

Global API Patent Invalidity Search

Patent Search Report

UNITED STATES PATENT SHEET 1 of 3

 INVALIDATED

11—

—17

8
1

—10

26

19

12

June 12, 2021



Lifescience Intellipedia Pvt. Ltd. is a market intelligence company providing global business information reports and services. Our exclusive blend of quantitative forecasting and trends analysis provides forward-looking insight for thousands of decision makers.

YOUR TRUSTED RESEARCH PARTNER

Right Data Right Decision

Cutting edge market research is the key to survive in today's dynamic world.

[Know More](#)

10000+

Project Delivered

Top notch delivery with top notch professionalism

1200+

Clients

Satisfaction of both global & domestic clients achieved unrelentingly

200+

Countries

Global engagements across the industries

30

Specialized Industry Focus

Highly focused organization supporting all life sciences & chemicals industries

Go to PC settings to activate Windows

VISIT US

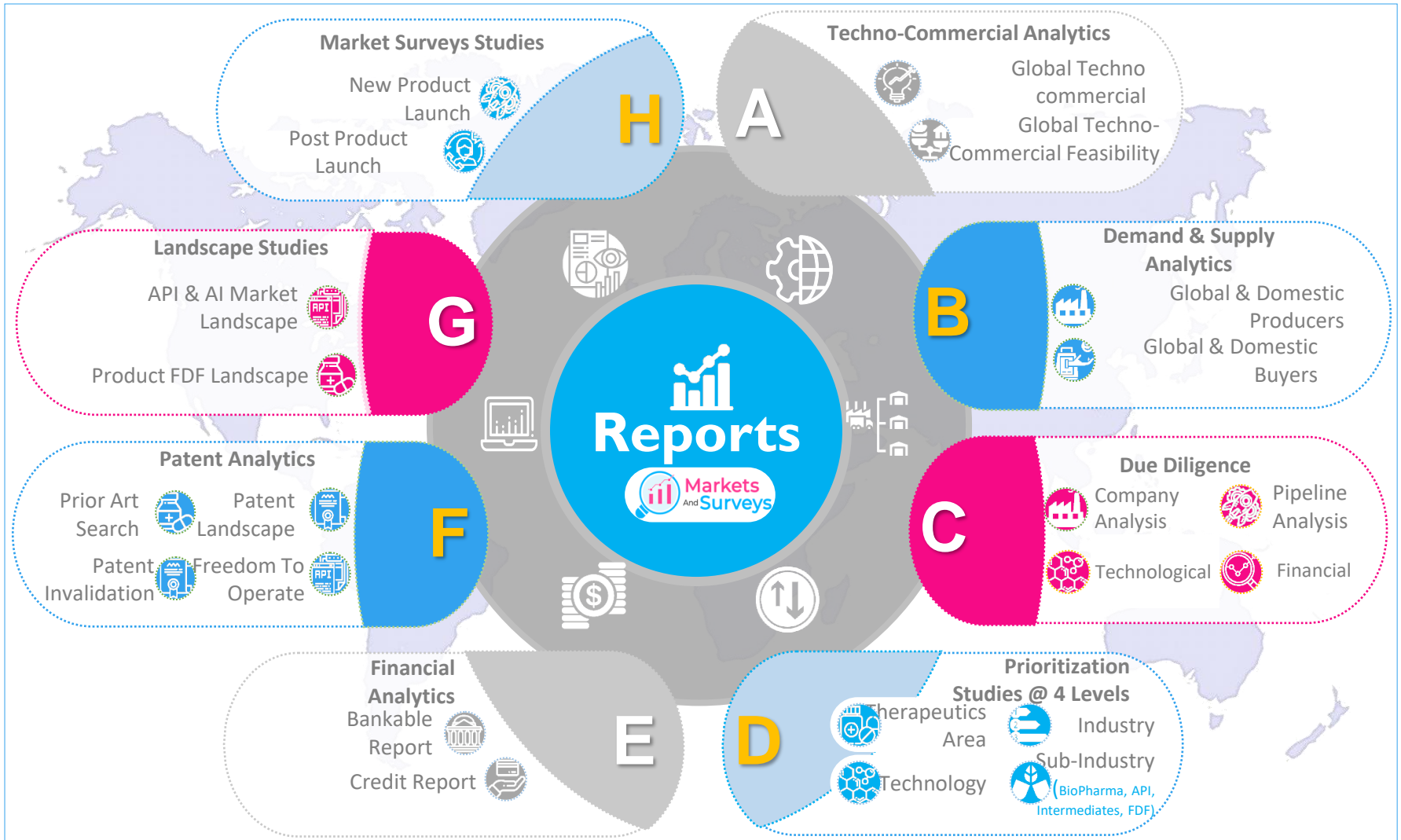


C-89, Sector-65, Noida-201301, India
+91-120-4670901-925
sales@lifescienceintellipedia.com
info@lifescienceintellipedia.com

<https://www.lifescienceintellipedia.com>

Each LSIP research report covers a different sectors such as pharmaceuticals, chemical, cosmetics, food and beverages, medical diagnostics kits, medical - devices, vaccines, dietary supplements, dyes, antibiotics and organic-inorganic chemicals. With wider scope and stratified research methodology, our reports strive to serve the overall research requirement of clients.

Market Research Reports



CHAPTER 1 EXECUTIVE SUMMARY

CHAPTER 2 Sample Methodology for invalidation Studies & Scope for

Sample Patent invalidation searches or opposition searches on Virtual Object Overlay

In order to prove that the patent is

- Non-novel and
- Non-obvious

Main objective of the invalidity search : To identify the relevant prior arts that has potential to invalidate the patent

CHAPTER 3 Client documents

CHAPTER 4 Invention idea

CHAPTER 5 Search methodology

CHAPTER 6 Search concepts

CHAPTER 7 Patent Classifications based on

- novelty, has inventive steps, and does not fall under the statutory exception of patents



CHAPTER 8 Search strategies

- Patent search strategies
- Non-patent search strategies

CHAPTER 9 Analysis: Applicable patent references found

CHAPTER 10 Analysis: Applicable non-patent literature found

Sample Methodology for invalidation Studies



Executive Summary

Global & Indian API Market 2020 in a Nutshell

SAMPLE

2020

Global API
Market



by Value
2020

\$190B

by Value
2025

\$250B

Growth rate
2020-2025

6%

Selected API
Market



by Value
2020

\$B**

by Value
2020

\$B**

Growth rate
2020-2025

****%**

Global Manufacturers Market share by Geography & Regional Growth Rate



Key Global Manufacturers

Merck

MERCK

Pfizer

Pfizer

TEVA

teva

Mylan

Mylan

Novartis

NOVARTIS

Sanofi

SANOFI

Search Strategy

Bibliography

List of Patents

Funnel Approach

Most Relevant

SAMPLE

Scope for Sample Invalidation Search on Virtual Object Overlay

- Patent invalidation searches or opposition searches are conducted to identify the patent and non-patent literature(s) that can hamper the claims of an invention rendering them non-novel and obvious, thus killing the patent¹. Invalidity search is an extensive search of relevant prior arts after the patent has been granted.
- The main objective of the invalidity search is to identify the relevant prior arts that were overlooked by the examiner and has potential to invalidate the patent. Invalidity search can also be used to validate the claims of a patent.
- The negative results of an invalidity search dictates that the patent has claims that holds novelty, has inventive steps, and does not fall under the statutory exception of patents.

Client documents



Scope of the Disclosure:

A method for overlaying real world with virtual objects having the following features:

- Creating virtual spheres or virtual objects at real world locations by users via their mobile devices.
- The users who create the virtual objects decide how other users can interact with the virtual objects.
- The virtual objects can be tied to a time window for future visibility.
- The virtual objects are based on the user's specifications – the virtual objects can be fixed to a location or moving.

SAMPLE

Invention idea



- A method for overlaying real world with virtual objects having the following features,
- Creating virtual spheres or virtual objects at real world locations by users via their mobile devices.
- The users who create the virtual objects decide how other users can interact with the virtual objects.
- The virtual objects can be tied to a time window for future visibility.
- The virtual objects are based on the users specifications ? the virtual objects can be fixed to a location or moving.

Search methodology



- Understood the invention by reading invention document provided by the client and divided the invention into multiple elements.
- Considered keywords from the invention document and collected classes related to the invention based on the technology mentioned in the invention document.
- Used Google prior-art search tool to identify both patent and non-patent prior-art data.
- Ran keyword searches in different patent databases such as Thomson Innovation, SIP, Questal Orbit.
- Ran class based patent search in Thomson Innovation where broad keywords are combined with classifications collected to identify relevant prior-art.
- Conducted non-patent literature search using keywords to identify relevant prior-art from Google scholar, Scirus.
- Conducted non-patent literature search using inventor names and citations of prior-art patent documents.
- Analyzed the search results from different search strategies. Identified the relevant documents, map and mark the relevant context with relevancy for the prior-art identified.
- Reported the results to the client and discussed on the results.



Contact Us

Ahmedabad (Branch)

2nd Floor, Block-N, S.G Road, Safal Mordeal
Retail Park, Bodak Dev, Near Rajpath Rangoli
Road,
Ahmedabad-380056 Gujarat, India
☎ +91-120-4670901-925

Email

sales@lifescienceintellipedia.com
info@lifescienceintellipedia.com

Noida (Head Office)

C-89, C Block, Sector 65, Noida,
Uttar Pradesh 201301
☎ +91-120-4670901-925

sales@lifescienceintellipedia.com
info@lifescienceintellipedia.com

Mumbai (Branch)

B wing, 5th Floor, Akruti trade Centre,MIDC.
Andheri(E), Mumbai-400093 M.H, India
☎ +91-120-4670901-925

sales@lifescienceintellipedia.com
info@lifescienceintellipedia.com